



TMCC TURTLE MOUNTAIN COMMUNITY COLLEGE

Turtle Mountain Community College: Priorities for the 118th Congress (February 2024)

Tribal Colleges and Universities (TCUs) provide rigorous postsecondary education and research opportunities for American Indians and Alaska Natives (AIANs) and other rural community residents. TCUs offer higher education that is uniquely tribal centered; founded on Native languages, culture and philosophy with strong student support systems and community engagement. Unfortunately, federal education completion metrics fail to consider the unique nature of TCUs and our students. Federal completion rates focus on first-time, full-time students. But success at TCUs is defined holistically and most students attend part-time or are transfer students. Our shared vision: Strong Sovereign Nations through Excellence in TRIBAL Higher Education.

Turtle Mountain Community College at a Glance

Enrollment Trends
693

Tuition and Fees
Undergraduate 1,313.00 | Graduate 2,983.00

Student to Faculty Ratio
10: 1

Persistence Retention Completion
59% | 28% - 40% | 65%

Highest Level of Degree Programing Offered
Master of Education

TRIO Programs Offered:
Yes

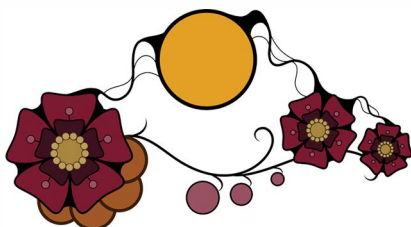
1994 Land-grant Institutions

The Equity in Educational Land-Grant Status Act created the "1994 Land-grants" more than 25 years ago. Since then, funding for the 1994 Land-grant programs and resources have remained inadequate to address the growing agriculture needs and opportunities in Indian Country.

How Turtle Mountain Community College Garners Community Building

Student Life at TMCC is centered around community engagement and connection. With various student lead chapters and professional development opportunities, students have the ability to interact with the Turtle Mountain Community with meaning. That essence is brought in full force when we consider the work done by the Turtle Mountain STEM Infusion Project (TMSIP), operating under a federal grant awarded by the National Science Foundation. Within the fall semester of the 2023-24 academic year, TMSIP revived the TMCC American Indian Science and Engineering Society

(AISES) and expanded their student capacity to 32 active members, currently the largest AISES college chapter in operations. TMSIP provides a platform for tribal members who are either in STEM fields or STEM adjacent fields to share their personal success stories as well as exposing the audience to many different professions through bi-weekly Learning Lunches. AISES Chapter Members demonstrated community involvement while getting into the holiday spirit by hosting a STEM Christmas Carnival. There were several different carnival games all related to STEM and over 900 elementary students came through the carnival leaving with some fun prizes, having visited a college, and interacted with some outgoing and fun TMCC students. Creating additional pathways for students and inspiring their educational and professional development through these transformative conversations and events.





Request: \$40 M TCU IT Service Fund - USDA Rural Utility Service
 The ongoing pandemic has exacerbated the digital divide and underscored the lack of broadband access across Indian Country. To address these deficiencies that could leave Indian Country- and AI/AN students- behind the rest of the U.S. for generations Congress must act to establish a permanent TCU IT Service Fund within the USDA-Rural Utilities Service Program. An annual \$40 million set-aside for TCUs which are 14 land-grant institutions served by USDA would help cover rapidly increasing network connectivity and equipment costs, maintenance infrastructure expansion and IT staffing.

Request: \$3.2 B TCU Construction Fund - DOI Bureau of Indian Education
 A July 2021 AIHEC survey of TCUs revealed many chronic unmet facilities and infrastructure needs including lack of student and faculty housing, inadequate classroom space, insufficient libraries and outdated laboratories.

-mbn) z) z)w w y B w v(CCC) ●) 2 w) 3
 -mbn) y)w))w.EA))●) 2 W 3
 -mbn) ww z) w) .EC) y ●) 2w)wy 9) z3)
 affff(b) b))))z zz) yw m)h)n) wy)
 chff: aff(d)) z y) wy) w x) w))z)v ED)b) A)

Where We Are

Since the last legislative Summit in 2023 TMCC has completed the following Campus improvements:

-
-
-

TMCC's Cyber Security Program

The Bachelor of Applied Science in Cyber Defense prepares students with the skills to defeat real-world cyber threats and cyberattacks. The curriculum encompasses both defensive and offensive cybersecurity techniques and concepts. With a strong emphasis on Anishinaabe ethics and worldviews demonstrated through the Sacred Seven Grandfather Teachings.

For the 2023-24 AY the TMCC Cyber Security Program has:

-
-

How We Need Help

With your support TMCC will be able to continue to improve our Campus and expand services to TMCC patrons and TMBCI community members. Our continued relationship will allow us to:

-
-
-
-
-
-

